

DISTRICT	COUNTY	TOWNSHIP	CITY	ROUTE	SECTION	TOTAL SHEETS
8-0	DAUPHIN	SWATARA	HARRISBURG	3010	014	8
				0441	014	

MPMS NO 113384

# COMMONWEALTH OF PENNSYLVANIA



## DEPARTMENT OF TRANSPORTATION

### DRAWINGS FOR CONSTRUCTION OF

STATE ROUTE 3010 SECTION 014

IN DAUPHIN COUNTY

FROM STA 62+80.00 TO STA 107+80.00 LENGTH 4500.00 FT. 0.852 MI.

FROM SEG \* OFFSET \* TO SEG \* OFFSET \*

AND

STATE ROUTE 0441 SECTION 014

IN DAUPHIN COUNTY

FROM STA 12+21.19 TO STA 13+97.00 LENGTH 75.81 FT. 0.014 MI.

FROM SEG \* OFFSET \* TO SEG \* OFFSET \*

\* SEGMENTS AND OFFSETS TO BE DETERMINED.

#### ALSO INCLUDED

TRAFFIC CONTROL PLAN	9 SHEETS
EROSION AND SEDIMENT POLLUTION CONTROL PLAN	12 SHEETS
SIGNING AND PAVEMENT MARKING PLAN	10 SHEETS
CROSS SECTIONS	9 SHEETS

**SR 0441 DESIGN DESIGNATION**

HIGHWAY CLASSIFICATION - MINOR ARTERIAL & COLLECTOR  
 DESIGN SPEED - 25 & 40 MPH  
 PAVEMENT WIDTH - 22'-0"  
 SHOULDER WIDTH - VARIES 2'-0" TO 4'-0"

**TRAFFIC DATA**

CURRENT ADT - 9,890 (2024)  
 DESIGN YEAR ADT - 11,473 (2044)  
 DHV - 1224  
 D - 50%  
 T - 3%

DESIGN FIELD VIEW SUBMITTAL  
JUNE 2022

PREPARED BY: GANNETT FLEMING, INC 207 SENATE AVENUE CAMP HILL, PA 17011	RECOMMENDED	DATE: _____
	PROJECT MANAGER	
	RECOMMENDED	DATE: _____
	DISTRICT EXECUTIVE	
RECOMMENDED	DATE: _____	
DEPUTY SECRETARY		
APPROVED	DATE: _____	
SECRETARY OF TRANSPORTATION		
(ON BEHALF OF THE GOVERNOR AS WELL AS THE SECRETARY)		

REG PROF ENGINEER  
DATE

9:18:16 AM  
1/6/2023

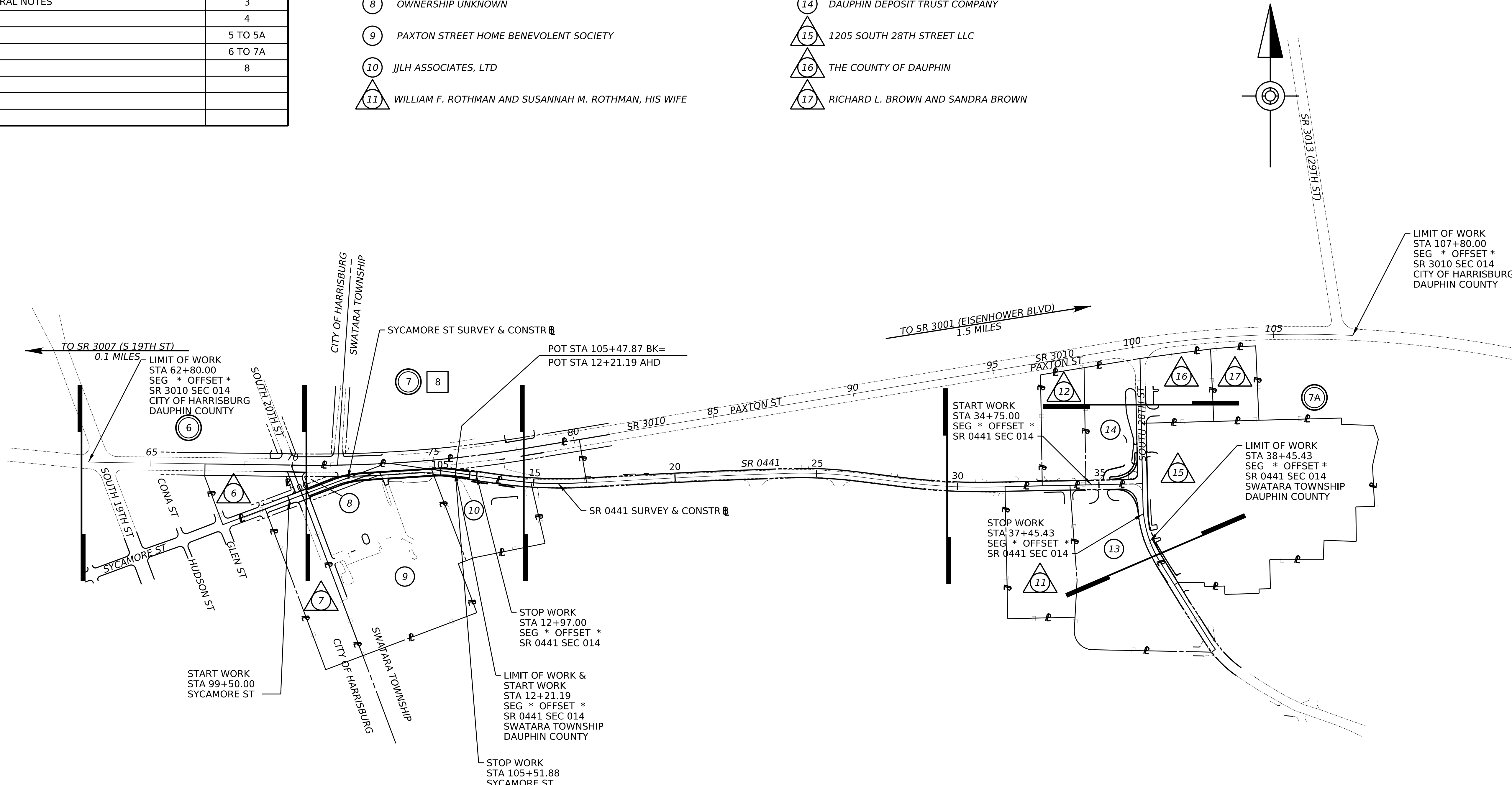
FILE NAME: c:\pwworking\pww01\journal\1433223167214\_1\03\_COI\_CT\_ROAD\_0\_0002.dgn

SHEET INDEX	
DESCRIPTION	SHEET
TITLE SHEET	1
INDEX MAP	2
LOCATION MAP & GENERAL NOTES	3
DETAILS	4
TYPICAL SECTIONS	5 TO 5A
PLAN SHEETS	6 TO 7A
PROFILE SHEET	8

**LIST OF PROPERTY OWNERS**

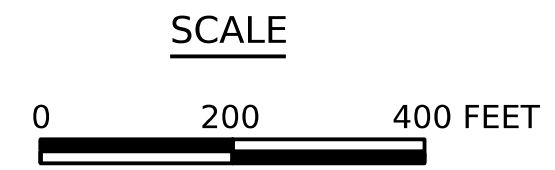
- |   |  |
|---|--|
| ⑥ GAIL L. FAULKNER & JOSEPH FAULKNER, TRUSTEES OF THE HENRY FAULKNER III QTIP TRUST CREATED UNDER THE REVOCABLE TRUST AGREEMENT | ⑫ MURPHY RENTALS, INC.                               |
| ⑦ PAXTON PLACE I LP, A PENNSYLVANIA LIMITED PARTNERSHIP   | ⑬ MHC AE 3 LLC, A DELAWARE LIMITED LIABILITY COMPANY |
| ⑧ OWNERSHIP UNKNOWN   | ⑭ DAUPHIN DEPOSIT TRUST COMPANY                      |
| ⑨ PAXTON STREET HOME BENEVOLENT SOCIETY   | ⑮ 1205 SOUTH 28TH STREET LLC                         |
| ⑩ J/LH ASSOCIATES, LTD  | ⑯ THE COUNTY OF DAUPHIN                              |
| ⑪ WILLIAM F. ROTHMAN AND SUSANNAH M. ROTHMAN, HIS WIFE  | ⑰ RICHARD L. BROWN AND SANDRA BROWN                  |

DISTRICT	COUNTY	ROUTE	SECTION	SHEET	
8-0	DAUPHIN	3010	014	2 OF 8	
		0441	014		
CITY OF HARRISBURG & SWATARA TOWNSHIP					
REVISION NUMBER	REVISIONS			DATE	BY



**LEGEND**

- PLAN
- PROFILE
- PARCEL IDENTIFICATION NUMBER
- △ PARCEL IDENTIFICATION NUMBER - NO TAKE
- SHEET LIMIT



\* SEGMENTS AND OFFSETS TO BE DETERMINED

**INDEX MAP**

9:18:28 AM  
 1/6/2023  
 PLOTTED:  
 FILE NAME: c:\pwworking\pww01\journal\14332323167214\_1\03\_COI\_CT\_ROAD\_0\_0003.dgn

**LIST OF UTILITIES**

PPL ELECTRIC UTILITIES  
 ATTN: CHARLOTTE KRUPA/AGENCY  
 COORDINATOR  
 2 NORTH 9TH STREET  
 ALLENTOWN, PA 18101  
 TEL: 610-774-6287  
 cakrupa@pplweb.com

VEOLIA NORTH AMERICA (WATER)  
 ATTN: JOHN T. MILLER,  
 PROJECT MANAGER  
 6310 ALLENTOWN BLVD  
 HARRISBURG, PA 17112  
 TELE: 717-901-6328  
 John.miller@suez.com

TELEPORT COMMUNICATIONS AMERICA, LLC  
 ATTN: JAY EVERLY  
 175 WEST MAIN STREET  
 FREEHOLD, NJ 07728  
 TELE: 215-279-4199  
 jay@trecgroup.com

E&T&CATV

W

E&T&CATV

EU

VERIZON  
 ATTN: ROBERT ZIMMEL  
 509 CHERRY DRIVE  
 HERSHEY PA 17033  
 TELE: 717-991-1589  
 Robert.Zimmel@one.verizon.com

SWATARA TWP AUTH (SANI-SEWER)  
 ATTN: GERRY MILLER, BUSINESS MGR  
 595 EISENHOWER BLVD  
 HARRISBURG, PA 17111  
 TELE: 717-564-1650  
 gmiller@STA4920.com

XO COMMUNICATIONS  
 ATTN: SCOTT DREILING  
 630 CLARK AVENUE  
 KING OF PRUSSIA, PA 19406-1407  
 TELE: 610-290-4300  
 Scott.j.dreiling@verizon.com

TU

S

E&T&CATV

COMCAST (CATV)  
 ATTN: MICHAEL SWEIGARD  
 4601 SMITH STREET  
 HARRISBURG, PA 17109  
 TELE: 717-298-6450  
 Mike\_Sweigard@comcast.com

UGI UTILITIES, INC (GAS)  
 ATTN: GEOFFREY FERGUSON  
 1301 AIP DRIVE  
 MIDDLETOWN, PA 17057  
 TELE: 610-807-3118  
 gferguson@ugi.com

E&T&CATV

G

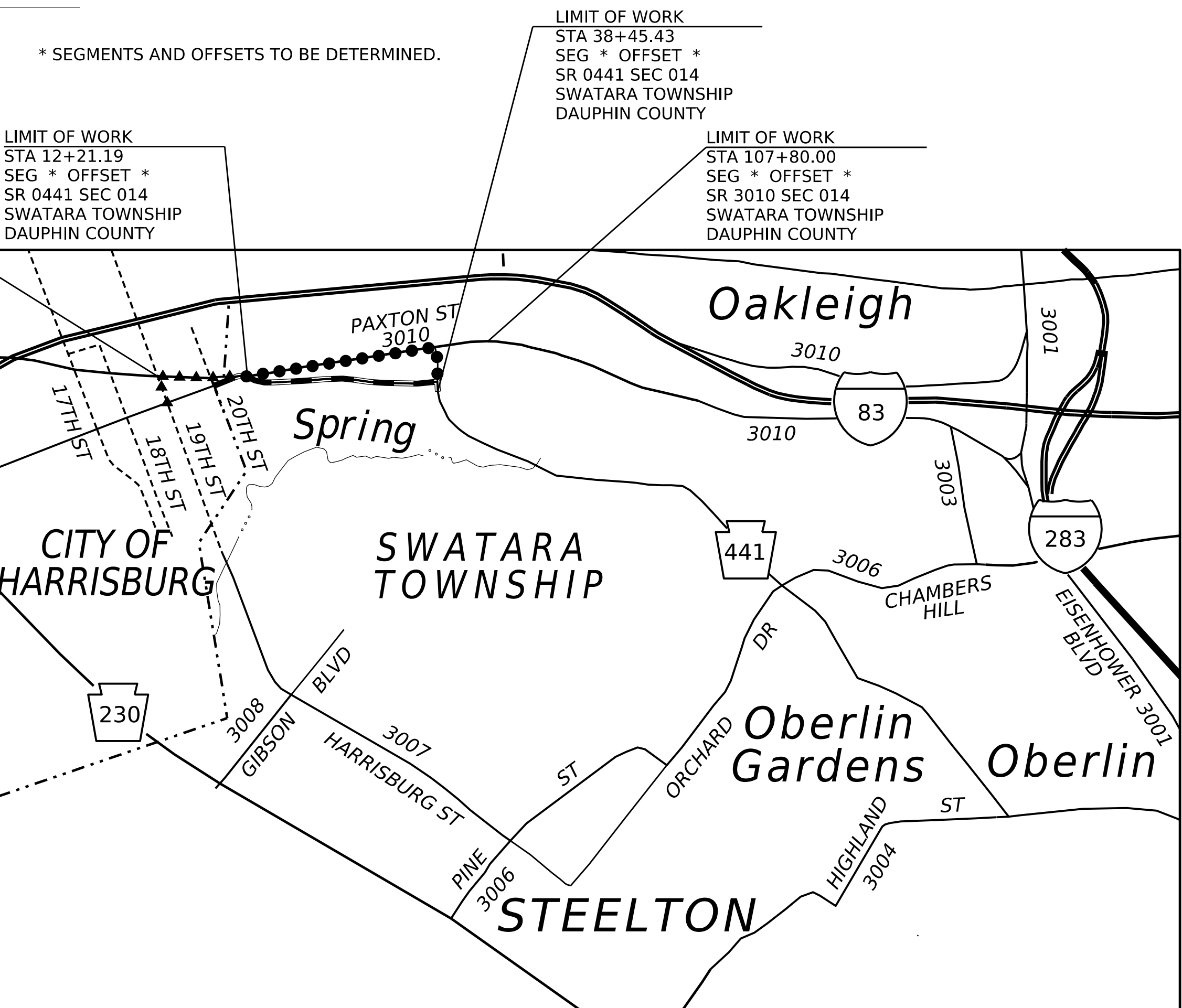
CTS, LLC, DBA FRONTIER  
 COMMUNICATIONS (TELECOM)  
 ATTN: ROBERT JANUSZKO, NETWORK  
 ENGINEER  
 FRONTIER COMMUNICATIONS  
 93 OLD BERWICK RD  
 DRUMS, PA 18222  
 TELE: (O) 570-788-1200  
 (C) 570-417-7759  
 Robert.januszko@ftr.com

AT&T  
 ATTN: JAY EVERLY  
 900 MARPLE ROAD  
 SPRINGFIELD, PA 19064  
 TELE: 215-279-4199  
 jay@trecgroup.com

E&T&CATV

TU

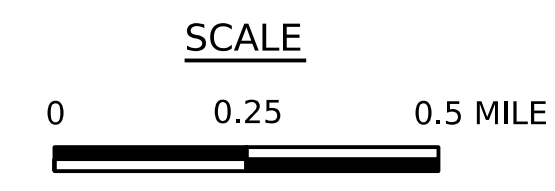
E&T&CATV



**LOCATION MAP**

**LEGEND**

- PROJECT
- STATE HIGHWAY
- STATE ROUTE
- TOWNSHIP ROAD
- MUNICIPAL BOUNDARY
- STREAM
- DETOUR 1: SYCAMORE ST (0.3 MILES)
- DETOUR 2: PA 441 (0.6 MILES)



**SUMMARY OF PROJECT COORDINATES**

HORIZONTAL CONTROL IS BASED ON NAD 83 (2011), REFERENCED TO THE PENNSYLVANIA STATE PLANE COORDINATE SYSTEM, SOUTH ZONE BY GPS/O.P.U.S COMBINED SCALE FACTOR = 0.99995238

ROUTE	STATION	POINT	COORDINATES (SEE NOTE 2)		BEARING
			NORTH	EAST	
SYCAMORE ST SURVEY & CONSTR	97+80.00	POB	336749.1728	2218853.3217	N68°51'02"E
	101+22.30	PC	336872.6744	2219172.5618	
	101+71.16	PI	336890.3028	2219218.1296	
	102+19.25	PT	336893.3459	2219266.8936	N86°25'45"W
	104+85.43	PC	336909.9252	2219532.5638	
	105+18.78	PI	336912.0023	2219565.8472	
105+51.88	PT & BK	336907.0861	2219598.8310	S81°31'21"E	
12+21.19	PT & AHD	336907.0861	2219598.8310		
13+52.30	PC	336887.7574	2219728.5096		
15+22.30	PI	336862.6964	2219896.6474		
16+91.11	PT	336872.2599	2220066.3734		
19+10.92	PI	336884.6262	2220285.8387		
21+24.49	PI	336895.2840	2220499.1403		
23+93.37	PC	336905.0670	2220767.8424		
25+15.72	PI	336909.5187	2220890.1127		
26+37.55	PT	336894.4067	2221011.5270		
28+07.73	PC	336873.3867	2221180.4072		
29+67.04	PI	336853.6759	2221338.7698		
31+26.34	PT	336857.0693	2221498.3181		
36+18.21	PC	336867.5283	2221990.0744		
36+46.50	PI	336868.2945	2222026.0986		
36+74.79	PT	336832.2696	2222026.8325		
37+11.85	PC	336795.2138	2222027.5873		
38+19.84	PI	336684.5442	2222029.8417		
39+27.83	POE	336590.7781	2222088.6699		
SR 0441 SURVEY & CONSTR	51+21.86	PC	337059.6467	2217151.0819	S76°30'03"E
	51+64.13	PI	337049.7781	2217192.1900	
	52+06.27	PT	337045.7713	2217234.2757	S84°33'42"E
	62+16.01	PC	336950.0715	2218239.4694	
	62+74.07	PI	336944.5684	2218297.2717	
	63+32.07	PT	336943.8328	2218355.3307	S89°16'27"E
	70+26.33	PC	336935.0376	2219049.5371	
	74+32.73	PI	336929.8891	2219455.8993	N80°35'33"E
	78+37.00	PT	336996.3161	2219856.8284	
	99+72.22	PC	337345.3273	2221963.3316	
	105+21.10	PI	337435.0446	2222504.8325	
110+62.52	PT	337368.6559	2223049.6858	S83°03'11"E	
20+00.00	POB	336868.2945	2222026.0986		
24+42.44	POE	337310.6427	2222017.0878	N01°10'01"W	
SOUTH 28TH STREET SURVEY & CONSTR					N01°10'01"W

NOTES:  
 1. FOUR (4) PLACE COORDINATES ARE USED FOR COMPUTATIONAL PURPOSES ONLY AND DO NOT IMPLY A PRECISION BEYOND TWO (2) PLACES.

**TABULATION OF OVERALL LENGTH**

SR 0441 STA 12+21.19 TO STA 38+45.43 = 2624.24 FT = 0.497 MI  
 SR 3010 STA 62+80.00 TO STA 106+80.00 = 4500.00 FT = 0.852 MI

**TABULATION OF CONSTRUCTION LENGTH**

SR 0441 STA 12+21.19 TO STA 37+45.43 = 2524.24 FT = 0.478 MI  
 SR 3010 STA 63+80.00 TO STA 106+80.00 = 4300.00 FT = 0.814 MI

**LIST OF STATION EQUALITIES**

SYCAMORE ST STA 105+47.87 BK = SR 0441 STA 12+21.19 AHD

**LIST OF SEGMENT EQUALITIES**

SEG 0290 OFFSET 0239 = STA 12+21

**EARTHWORK SUMMARY ENTIRE PROJECT**

CUBIC YDS OF EXCAVATION					CUBIC YDS OF COMPLETED EMBANKMENT	TONS SEL BORROW EXC (R-4)
CLASS 1	CLASS 1B	CLASS 2	CLASS 3	CLASS 4		
1185 C.Y.	-	-	-	-	279 C.Y.	

THE INFORMATION ON ESTIMATED AMOUNTS OF EARTHWORK HAS BEEN USED IN THE PRELIMINARY ESTIMATE. DO NOT USE AS A WAIVER OF ANY PROVISIONS OF THE SPECIFICATIONS AND CONTRACTS.

**GENERAL NOTES**

THE LEGAL RIGHT-OF-WAY ON SR 3010, FORMERLY LR 139 SPUR, IS EIGHTY FEET IN WIDTH FROM STA 857+85.00 (SLD STA 858+85) TO STATION 980+00.00 (SLD STA 980+00) BASED ON THE RIGHT-OF-WAY PLAN FOR LR 767(I-83), DATED SEPTEMBER 10, 1976, AND PLAN FOR LR 139 SPUR DATED SEPTEMBER 5, 1935.

THE LEGAL RIGHT-OF-WAY ON SOUTH 20TH STREET BETWEEN SR 3010 (PAXTON STREET) AND SYCAMORE STREET IS 60 FEET BASED ON ORDAINED RIGHT-OF-WAY WIDTH ON PLAN FOR LR 139 SPUR DATED SEPTEMBER 5, 1935.

THE LEGAL RIGHT OF WAY ON S.R. 0441 FORMERLY KNOWN AS L.R. 618, FROM STA 12+21.19 (SLD STA 12+21.19) TO STA 36+44.00 (SLD STA 36+44.00) VARIES FROM FORTY ONE AND HALF TO ONE HUNDRED AND NINETY TWO FEET (41.5' - 192') BASED ON PLAN OF SR 441, SEC. 005 R/W RECORDED IN DAUPHIN COUNTY COURTHOUSE IN HIGHWAY BOOK - I, PAGE 15 AND SIGNED BY THE SECRETARY OF TRANSPORTATION ON OCTOBER 28, 1998.

CUT PAVING NOTCHES FOR ALL BITUMINOUS DRIVES AND SIDE ROADS.

VERIFY ALL DRAINAGE FACILITIES FOR TYPE, SIZE AND LOCATION.

DETAILS, OTHER THAN THOSE INDICATED ARE ON THE FOLLOWING STANDARD DRAWINGS:

RC-10M JUN 1, 2010	RC-46M FEB 19, 2021
RC-13M JUN 1, 2010	RC-58M AUG 4, 2017
RC-25M NOV 30, 2021	RC-64M FEB 19, 2021
RC-28M FEB 8, 2019	RC-67M FEB 19, 2021
RC-30M NOV 30, 2021	RC-77M DEC 17, 2019
RC-31M NOV 30, 2021	
RC-33M JUN 1, 2010	TC-8600 AUG 30, 2004
RC-39M NOV 30, 2021	TC-8604 AUG 30, 2004
RC-45M FEB 19, 2021	TC-8700 AUG 1, 1997

THREE TO TEN WORKING DAYS PRIOR TO EXCAVATION BASED ON THE COMPLEXITY OF THE PROJECT, THE CONTRACTOR MUST CONTACT THE PA ONE CALL SYSTEM, INC., PHONE 1-800-242-1776, SERIAL NO. 20221330595 FOR HARRISBURG CITY. SERIAL NO.220500295, 20221330596 AND 20223531061 FOR SWATARA TOWNSHIP. ADDITIONAL INFORMATION IS AVAILABLE AT [HTTPS://WWW.PA1CALL.ORG/PA811/PUBLIC/](https://www.pa1call.org/pa811/public/).

THE CONTRACTOR IS REQUIRED TO NOTIFY THE DEPARTMENT AND SUBMIT AN ALLEGED VIOLATION REPORT (AVR) TO THE PA PUBLIC UTILITY COMMISSION THROUGH THE PA ONE CALL SYSTEM, WWW.PA1CALL.ORG, WITHIN TEN (10) BUSINESS DAYS AFTER A UTILITY LINE IS STRUCK, DAMAGED, OR PREVIOUS DAMAGE IS DISCOVERED AS REQUIRED BY PENNSYLVANIA'S UNDERGROUND UTILITY LINE PROTECTION LAW ACT 50 (P.L.852, NO. 287 AMENDED OCT. 30, 2017).

TEMPORARY CONSTRUCTION EASEMENT. AN EASEMENT TO USE THE LAND AS NECESSARY DURING CONSTRUCTION OF THE PROJECT. THE EASEMENT IS REQUIRED ONLY UNTIL THE CONSTRUCTION OR WORK INDICATED BY THE PLAN IS COMPLETED, UNLESS SOONER RELINQUISHED IN WRITING BY THE DEPARTMENT.

DRAINAGE EASEMENT. AN EASEMENT FOR THE CONSTRUCTION, INSPECTION, MAINTENANCE, REPAIR, RECONSTRUCTION AND ALTERNATION OF HIGHWAY DRAINAGE FACILITIES. THE EASEMENT SHALL NOT PREVENT THE PROPERTY OWNER FROM MAKING ANY LEGAL USE OF THE AREA WHICH IS NOT DETRIMENTAL TO THE NECESSARY FLOW OF WATER. HOWEVER, NO STRUCTURE OF ANY KIND MAY BE ERRECTED IN THE AREA, NOR MAY ANY PIPE OR DITCH BE CONNECTED TO THE DEPARTMENT'S PIPE OR DITCH WITHOUT ADVANCED WRITTEN APPROVAL BY THE DEPARTMENT OF TRANSPORTATION.

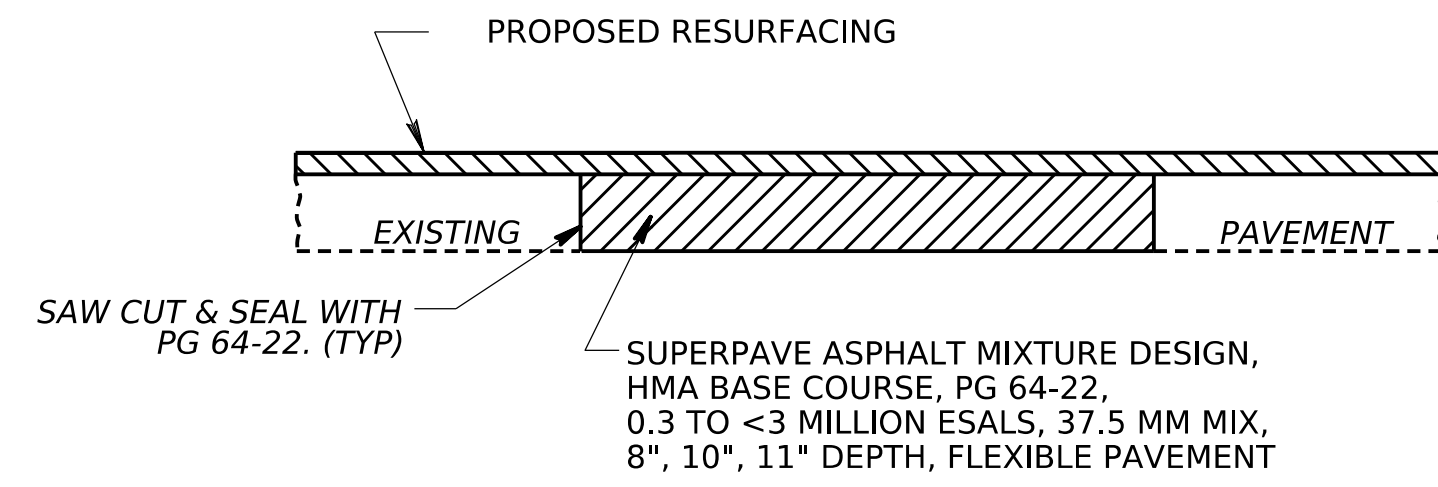
HORIZONTAL CONTROL IS BASED ON NAD 83 (2011), REFERENCED TO THE PENNSYLVANIA STATE PLANE COORDINATE SYSTEM, SOUTH ZONE BY GPS/O.P.U.S.

COMBINED SCALE FACTOR = 0.99995238

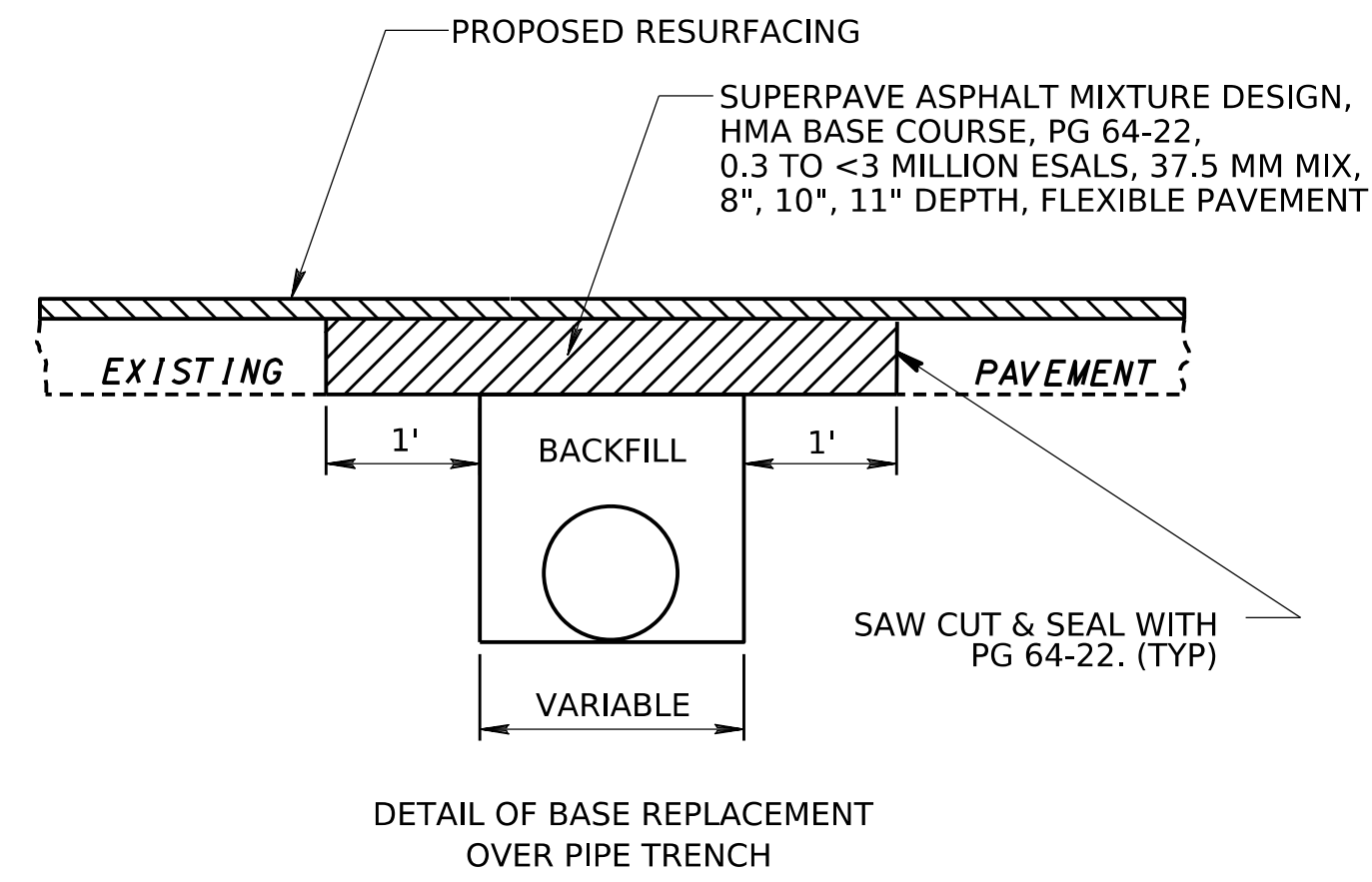
THE VERTICAL DATUM FOR THIS PLAN IS BASED ON NORTH AMERICAN VERTICAL DATUM NAVD 88 (GEOID 18).

ALL CURVE DATA IS BASED ON THE ARC DEFINITION UNLESS OTHERWISE NOTED.

DISTRICT	COUNTY	ROUTE	SECTION	SHEET
8-0	DAUPHIN	3010	014	4 OF 8
		0441	014	
CITY OF HARRISBURG & SWATARA TOWNSHIP				
REVISION NUMBER	REVISIONS	DATE	BY	

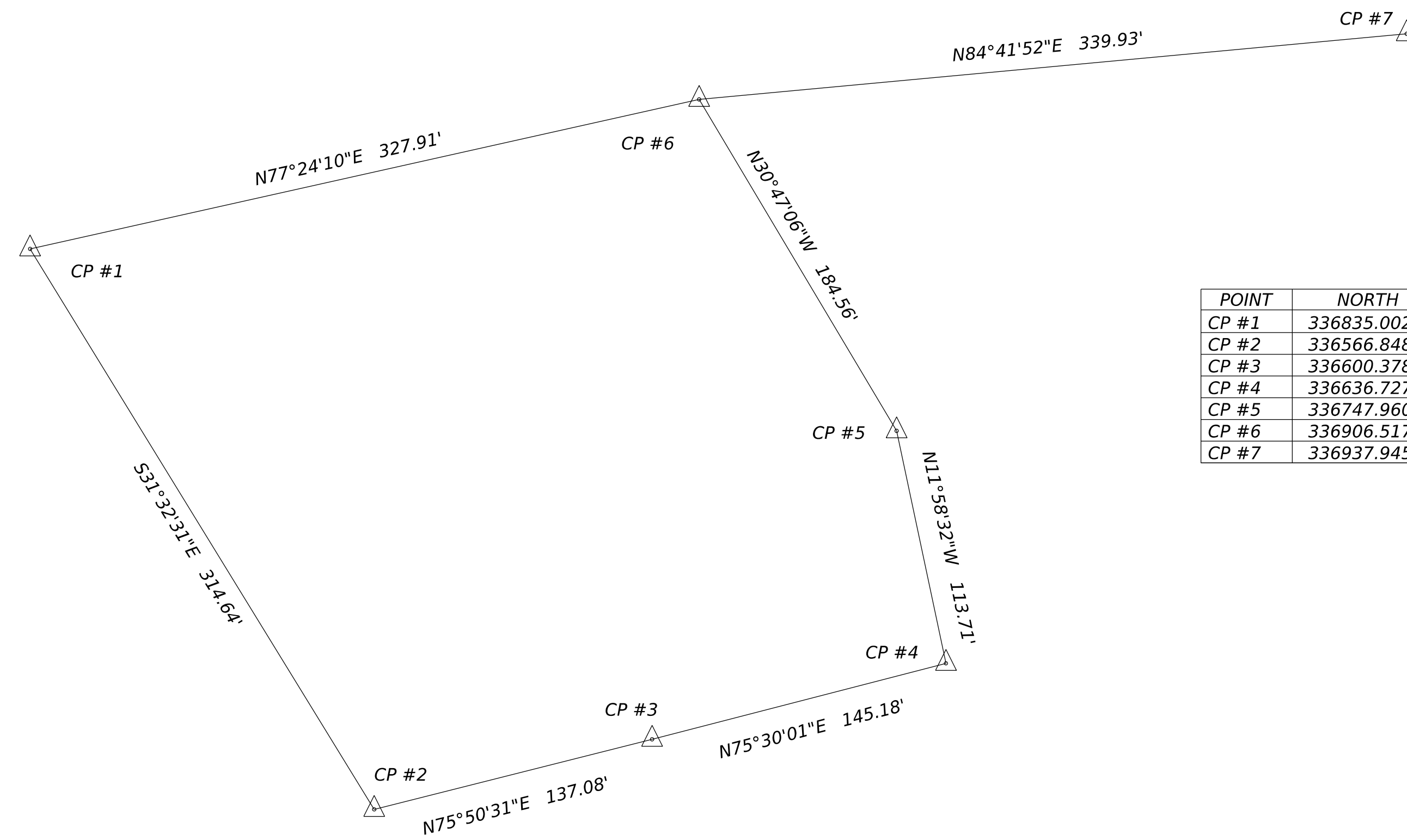


DETAIL OF BASE REPLACEMENT

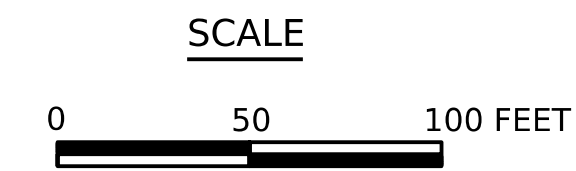


DETAIL OF BASE REPLACEMENT OVER PIPE TRENCH

- SUPERPAVE BASE REPLACEMENT, 8" DEPTH, FLEXIBLE PAVEMENT (ITEM NO. 9309-9008)
- SUPERPAVE BASE REPLACEMENT, 10" DEPTH, FLEXIBLE PAVEMENT (ITEM NO. 9309-9010)
- SUPERPAVE BASE REPLACEMENT, 11" DEPTH, FLEXIBLE PAVEMENT (ITEM NO. 9309-9011)



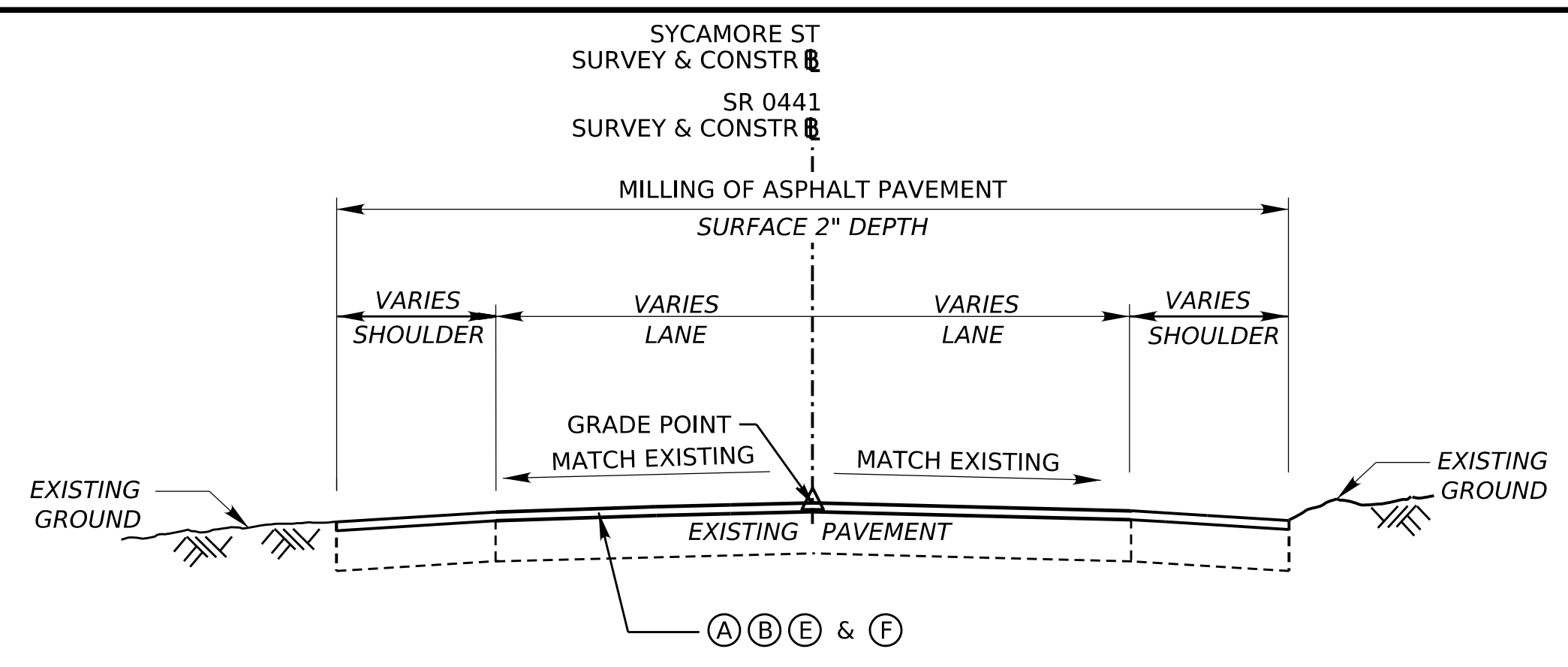
POINT	NORTH	EAST	ELEV	DESC
CP #1	336835.0020	2218997.8390	383.26	MAG NAIL
CP #2	336566.8485	2219162.4347	386.72	MAG NAIL
CP #3	336600.3786	2219295.3535	386.83	REBAR/CAP
CP #4	336636.7271	2219435.9067	384.89	REBAR/CAP
CP #5	336747.9606	2219412.3131	385.93	REBAR/CAP
CP #6	336906.5170	2219317.8508	388.00	REBAR/CAP
CP #7	336937.9455	2219656.4282	392.04	REBAR/CAP



TRAVERSE POINT SKETCH

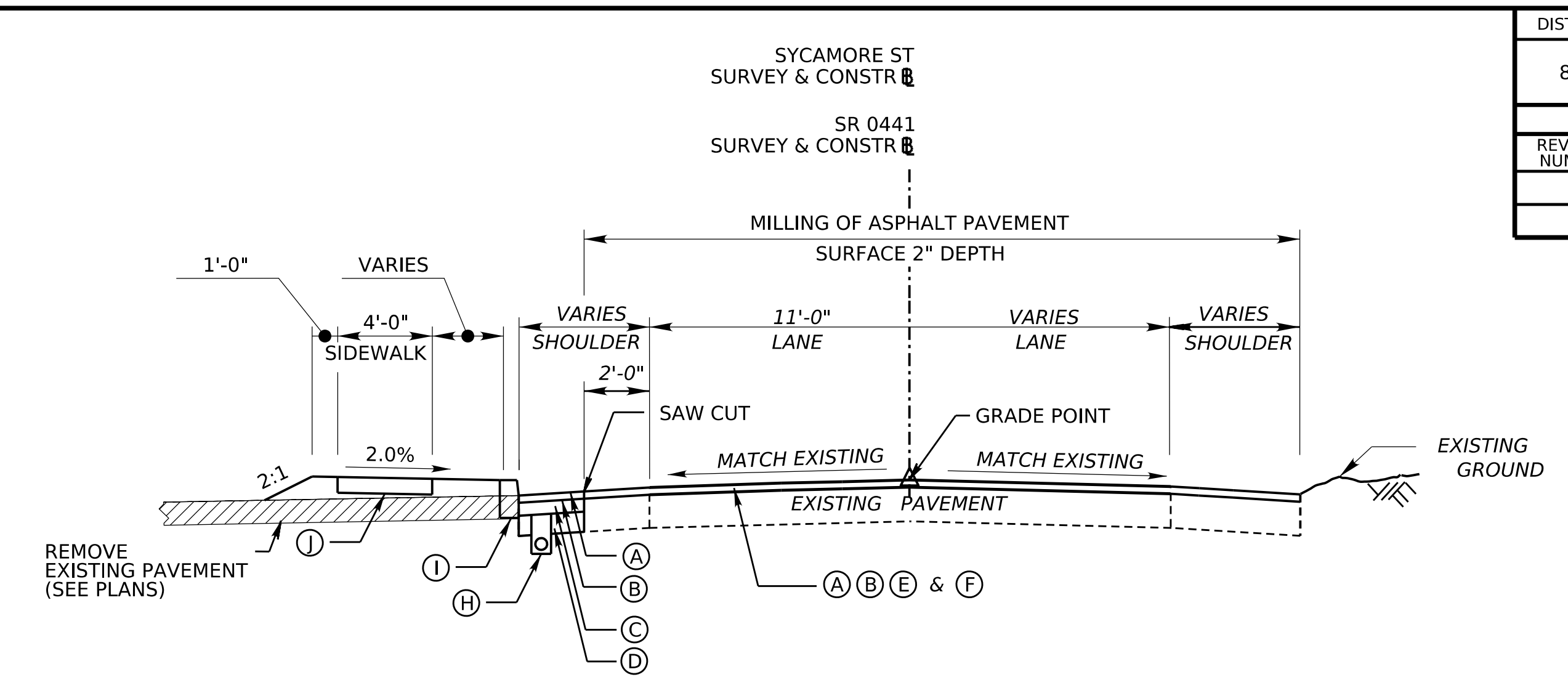
9:18:44 AM  
 1/6/2023  
 PLOTTED:  
 FILE NAME: c:\pwworking\pww01\journal\1433223167214\_1\03\_C01\_CT\_ROAD\_2\_0001.dgn

DISTRICT	COUNTY	ROUTE	SECTION	SHEET
8-0	DAUPHIN	3010	014	5 OF 8
CITY OF HARRISBURG & SWATARA TOWNSHIP				
REVISION NUMBER	REVISIONS	DATE	BY	



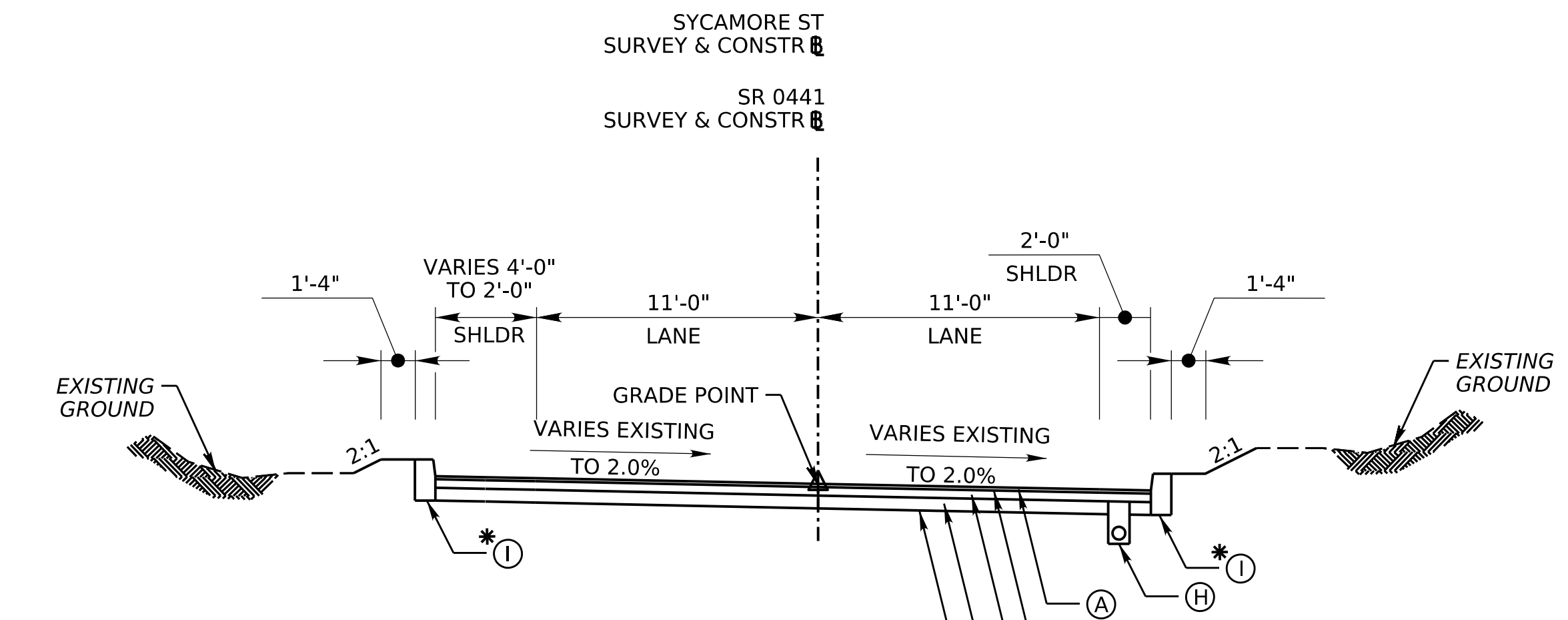
**SR 0441 (SYCAMORE STREET)**  
**TYPICAL MILL AND OVERLAY SECTION**

NOT TO SCALE  
 STA 99+50.00 TO STA 99+64.54  
 STA 12+72.00 TO STA 12+97.00



**SR 0441 (SYCAMORE STREET)**  
**TYPICAL SECTION**

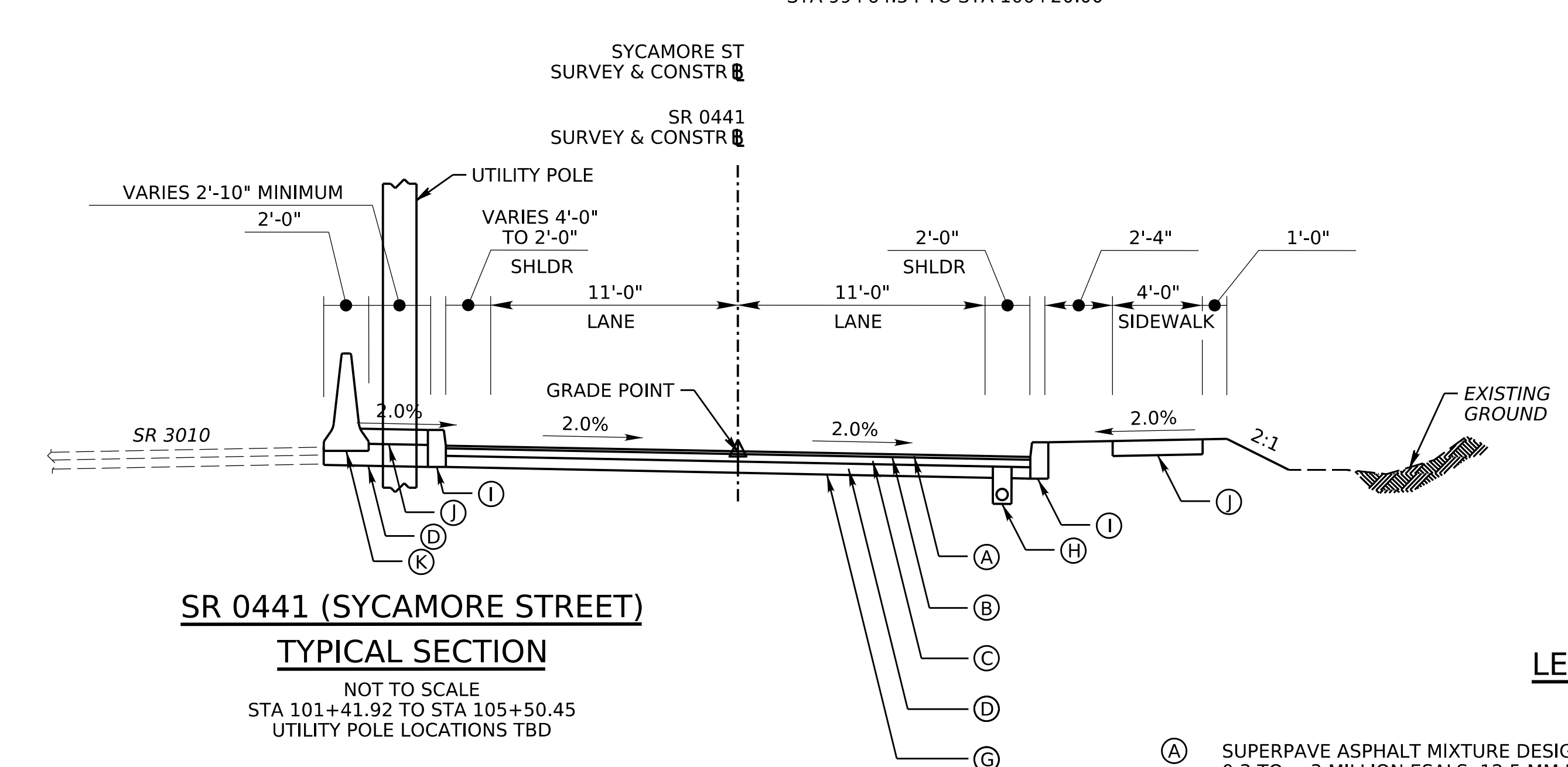
NOT TO SCALE  
 STA 99+64.54 TO STA 100+20.00



**SR 0441 (SYCAMORE STREET)**  
**TYPICAL SECTION**

NOT TO SCALE  
 STA 100+20.00 TO STA 101+41.92  
 STA 105+50.45 TO STA 12+72.00

\* STA 100+20.00 TO STA 101+41.92 LT/RT



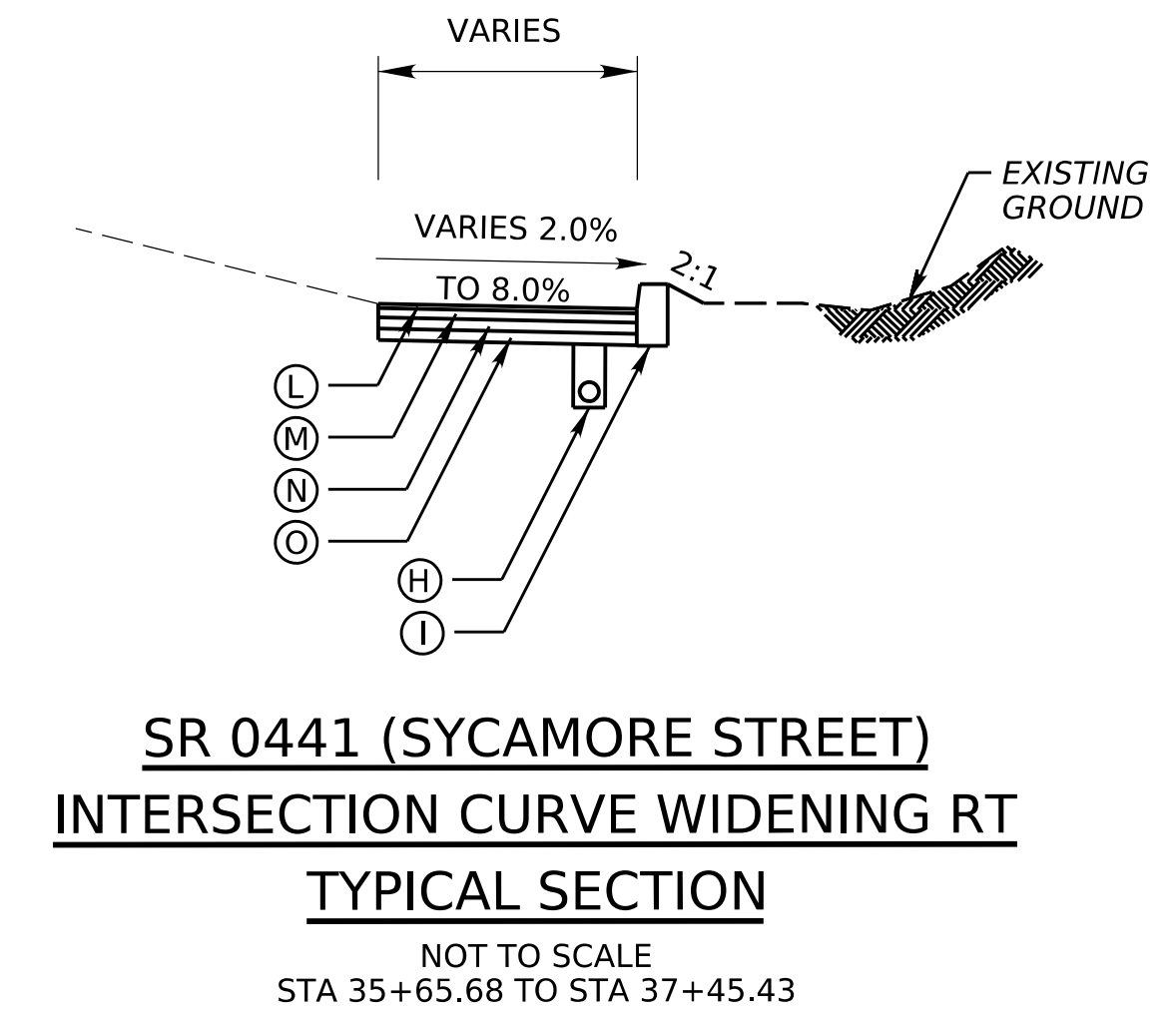
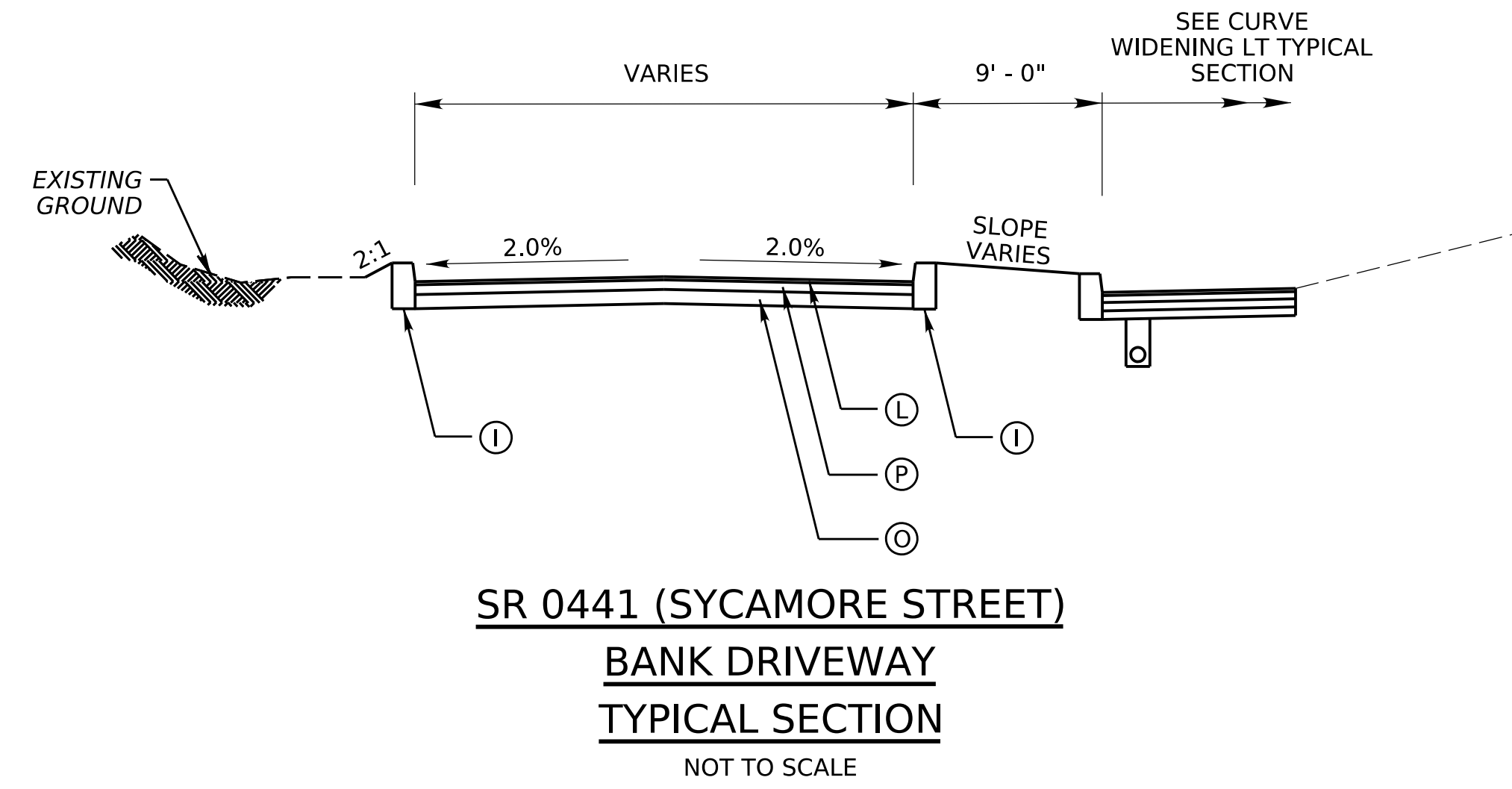
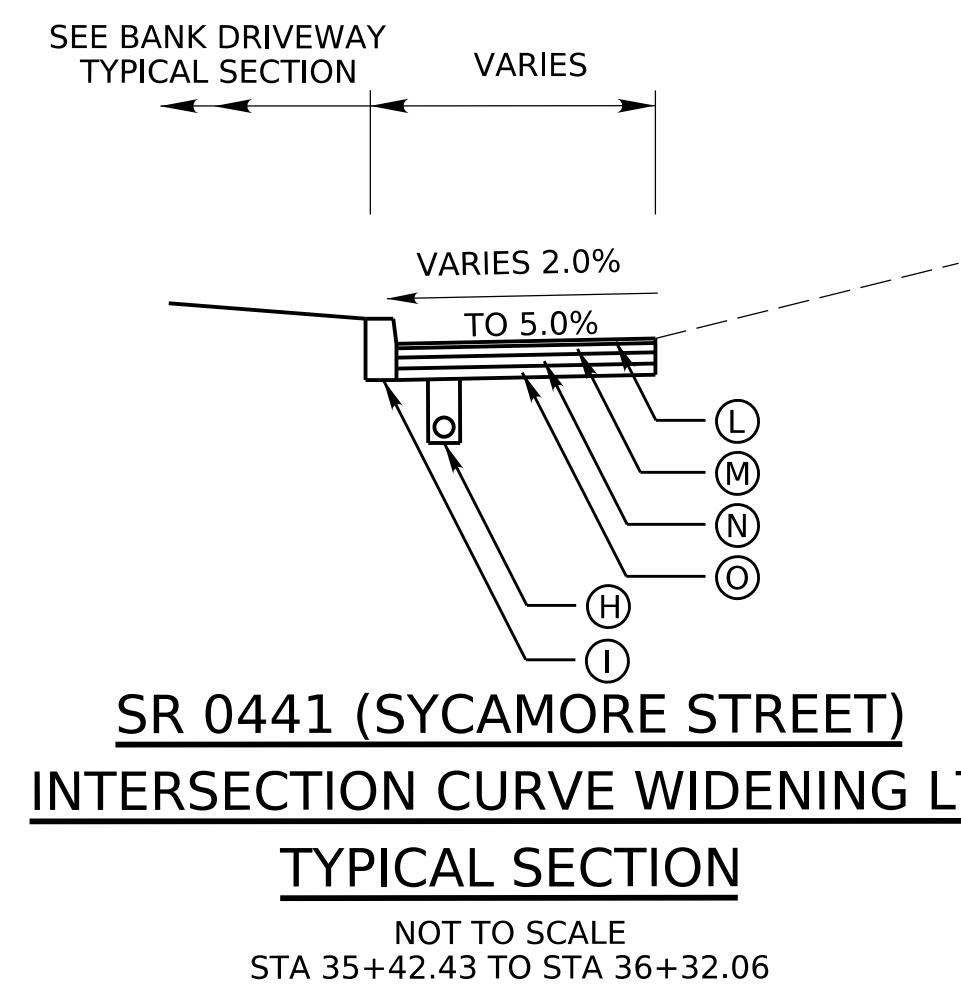
**SR 0441 (SYCAMORE STREET)**  
**TYPICAL SECTION**

NOT TO SCALE  
 STA 101+41.92 TO STA 105+50.45  
 UTILITY POLE LOCATIONS TBD

**LEGEND**

- (A) SUPERPAVE ASPHALT MIXTURE DESIGN, WEARING COURSE, PG 645-22, 0.3 TO < 3 MILLION ESALS, 12.5 MM MIX, 2" DEPTH, SRL-E
- (B) ASPHALT TACK COAT
- (C) SUPERPAVE ASPHALT MIXTURE DESIGN, BASE COURSE, PG 645-22, 0.3 TO < 3 MILLION ESALS, 25.0 MM MIX, 6" DEPTH
- (D) SUBBASE, 8" DEPTH (NO. 2A)
- (E) MILLING OF ASPHALT PAVEMENT SURFACE, 2" DEPTH, MILLED MATERIAL RETAINED BY CONTRACTOR
- (F) SUPERPAVE ASPHALT MIXTURE DESIGN, WEARING COURSE (SCRATCH), PG 645-22, 0.3 TO < 3 MILLION ESALS, 9.5 MM MIX, SRL-L
- (G) GEOTEXTILE, CLASS 4, TYPE A
- (H) 6" PAVEMENT BASE DRAIN
- (I) PLAIN CEMENT CONCRETE CURB, 6" HEIGHT
- (J) CEMENT CONCRETE SIDEWALK
- (K) CONCRETE MEDIAN BARRIER, F-SHAPE, 50" HEIGHT
- (L) SUPERPAVE ASPHALT MIXTURE DESIGN, WEARING COURSE, PG 645-22, 0.3 MILLION TO < 3 MILLION ESALS, 9.5 MM MIX, 1 1/2" DEPTH, SRL-H
- (M) SUPERPAVE ASPHALT MIXTURE DESIGN, BINDER COURSE, PG 645-22, 0.3 MILLION TO < 3 MILLION ESALS, 19.0 MM MIX, 2 1/2" DEPTH
- (N) SUPERPAVE ASPHALT MIXTURE DESIGN, BASE COURSE, PG 645-22, 0.3 MILLION TO < 3 MILLION ESALS, 25.0 MM MIX, 9" DEPTH
- (O) SUBBASE 6" DEPTH (NO. 2A)
- (P) SUPERPAVE ASPHALT MIXTURE DESIGN, BASE COURSE, PG 645-22, 0.3 MILLION TO < 3 MILLION ESALS, 25.0 MM MIX, 4" DEPTH

DISTRICT	COUNTY	ROUTE	SECTION	SHEET
8-0	DAUPHIN	3010 0441	014 014	5A OF 8
CITY OF HARRISBURG & SWATARA TOWNSHIP				
REVISION NUMBER	REVISIONS	DATE	BY	



**LEGEND**



- (A) SUPERPAVE ASPHALT MIXTURE DESIGN, WEARING COURSE, PG 64S-22, 0.3 TO < 3 MILLION ESALS, 12.5 MM MIX, 2" DEPTH, SRL-E
- (B) ASPHALT TACK COAT
- (C) SUPERPAVE ASPHALT MIXTURE DESIGN, BASE COURSE, PG 64S-22, 0.3 TO < 3 MILLION ESALS, 25.0 MM MIX, 6" DEPTH
- (D) SUBBASE, 8" DEPTH (NO. 2A)
- (E) MILLING OF ASPHALT PAVEMENT SURFACE, 2" DEPTH, MILLED MATERIAL RETAINED BY CONTRACTOR
- (F) SUPERPAVE ASPHALT MIXTURE DESIGN, WEARING COURSE (SCRATCH), PG 64S-22, 0.3 TO < 3 MILLION ESALS, 9.5 MM MIX, SRL-L
- (G) GEOTEXTILE, CLASS 4, TYPE A
- (H) 6" PAVEMENT BASE DRAIN
- (I) PLAIN CEMENT CONCRETE CURB, 6" HEIGHT
- (J) CEMENT CONCRETE SIDEWALK
- (K) CONCRETE MEDIAN BARRIER, F-SHAPE, 50" HEIGHT
- (L) SUPERPAVE ASPHALT MIXTURE DESIGN, WEARING COURSE, PG 64S-22, 0.3 MILLION TO < 3 MILLION ESALS, 9.5 MM MIX, 1 1/2" DEPTH, SRL-H
- (M) SUPERPAVE ASPHALT MIXTURE DESIGN, BINDER COURSE, PG 64S-22, 0.3 MILLION TO < 3 MILLION ESALS, 19.0 MM MIX, 2 1/2" DEPTH
- (N) SUPERPAVE ASPHALT MIXTURE DESIGN, BASE COURSE, PG 64S-22, 0.3 MILLION TO < 3 MILLION ESALS, 25.0 MM MIX, 9" DEPTH
- (O) SUBBASE 6" DEPTH (NO. 2A)
- (P) SUPERPAVE ASPHALT MIXTURE DESIGN, BASE COURSE, PG 64S-22, 0.3 MILLION TO < 3 MILLION ESALS, 25.0 MM MIX, 4" DEPTH

9:19:05 AM  
1/6/2023  
PLOTTED:

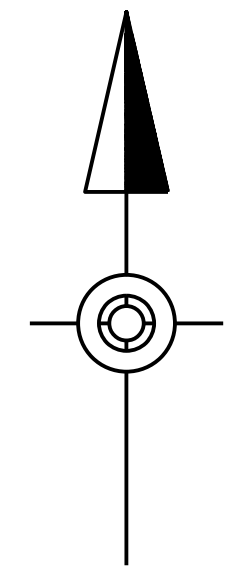
FILE NAME: c:\pwworking\pww01\journal\1433223167214\_1\03\_C01\_CT\_ROAD\_4\_0001.dgn

DISTRICT	COUNTY	ROUTE	SECTION	SHEET
8-0	DAUPHIN	3010	014	6 OF 8
CITY OF HARRISBURG & SWATARA TOWNSHIP				
REVISION NUMBER	REVISIONS	DATE	BY	

### LEGEND

-  PAVEMENT REMOVAL
-  MILL AND OVERLAY

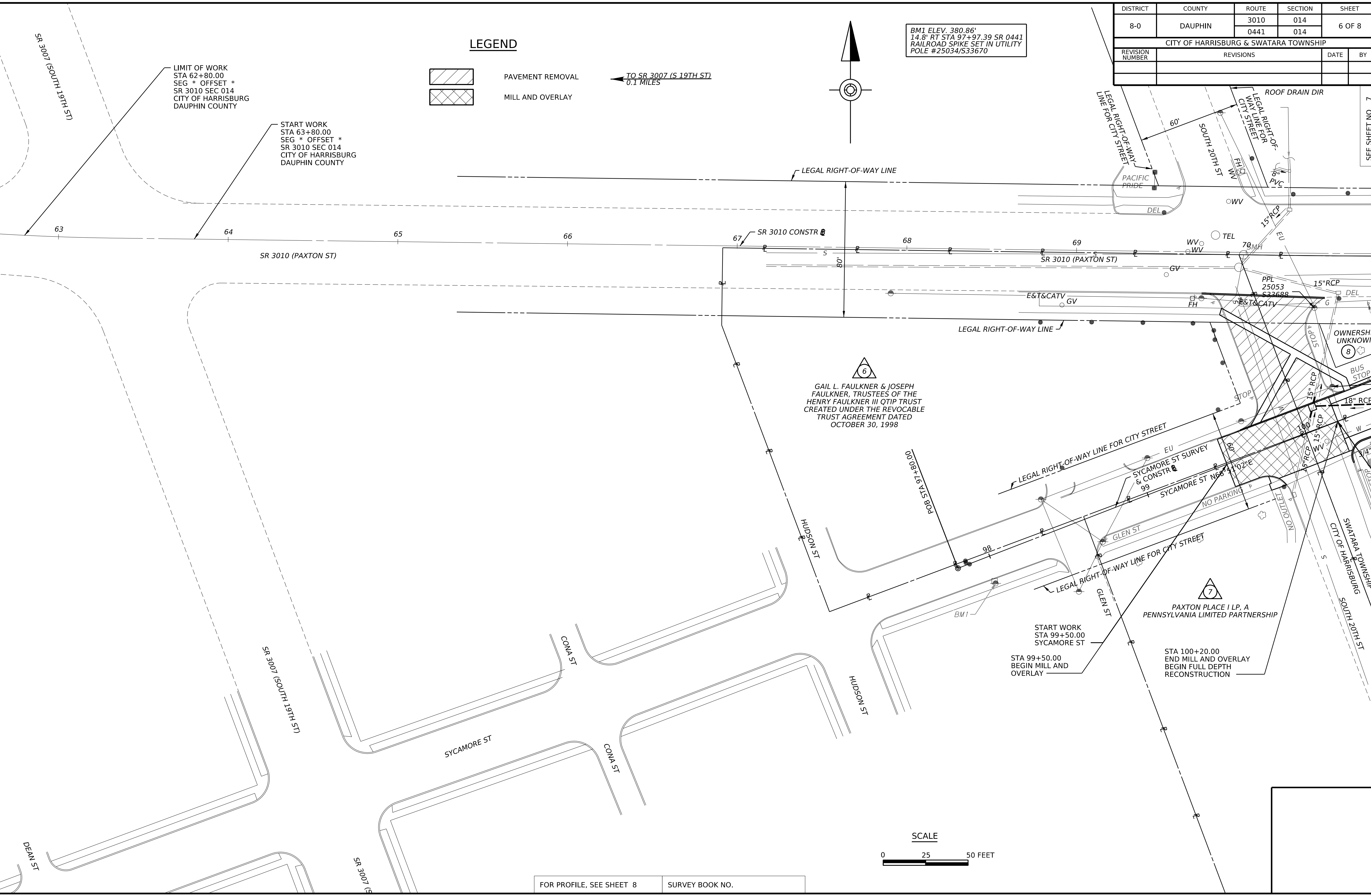
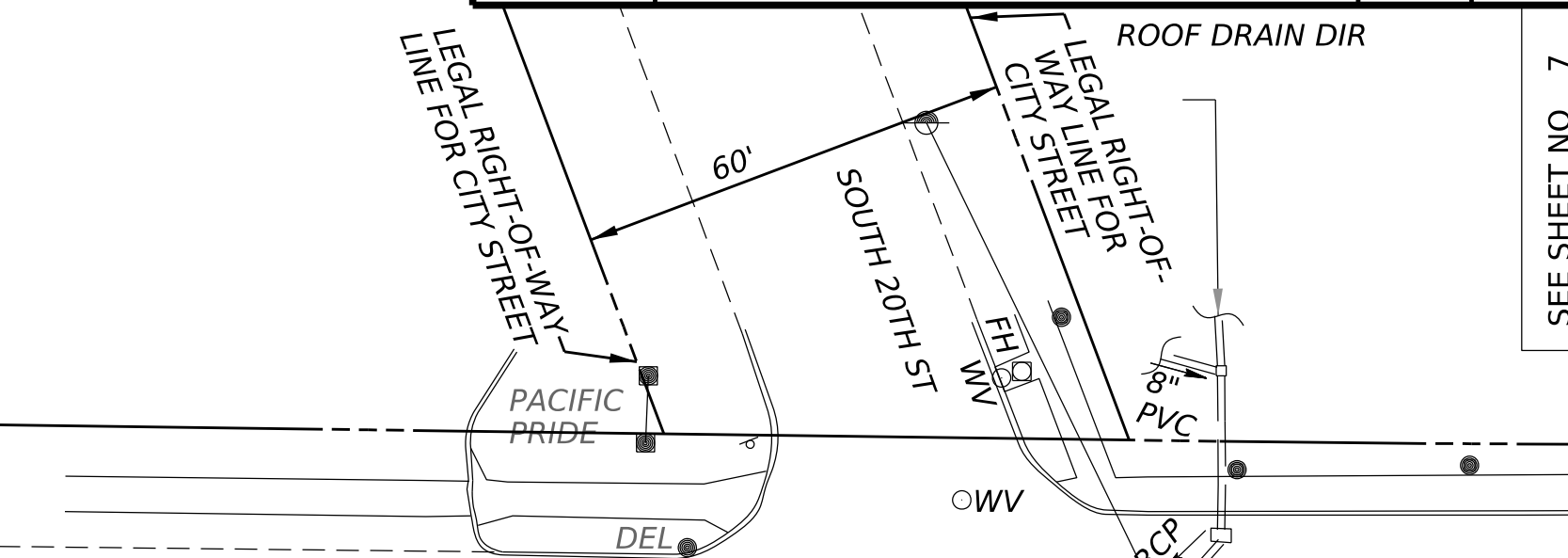
← TO SR 3007 (S 19TH ST)  
0.1 MILES



BM1 ELEV. 380.86'  
14.8' RT STA 97+97.39 SR 0441  
RAILROAD SPIKE SET IN UTILITY  
POLE #25034/S33670

LIMIT OF WORK  
STA 62+80.00  
SEG \* OFFSET \*  
SR 3010 SEC 014  
CITY OF HARRISBURG  
DAUPHIN COUNTY

START WORK  
STA 63+80.00  
SEG \* OFFSET \*  
SR 3010 SEC 014  
CITY OF HARRISBURG  
DAUPHIN COUNTY



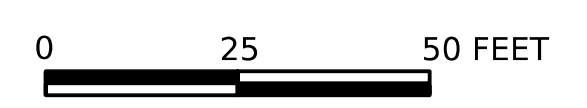
6  
GAIL L. FAULKNER & JOSEPH  
FAULKNER, TRUSTEES OF THE  
HENRY FAULKNER III QTIP TRUST  
CREATED UNDER THE REVOCABLE  
TRUST AGREEMENT DATED  
OCTOBER 30, 1998

7  
PAXTON PLACE I LP, A  
PENNSYLVANIA LIMITED PARTNERSHIP

START WORK  
STA 99+50.00  
SYCAMORE ST

STA 100+20.00  
END MILL AND OVERLAY  
BEGIN FULL DEPTH  
RECONSTRUCTION

### SCALE



SEE SHEET NO 7

9:19:14 AM  
1/6/2023  
PLOTTED:

FILE NAME: c:\pwworking\pww01\journal\14332323167214\_1\03\_C01\_CT\_ROAD\_4\_0002.dgn

SEE SHEET NO 6

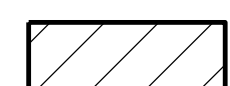
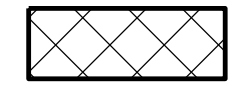
DISTRICT	COUNTY	ROUTE	SECTION	SHEET
8-0	DAUPHIN	3010	014	7 OF 8
CITY OF HARRISBURG & SWATARA TOWNSHIP				
REVISION NUMBER	REVISIONS	DATE	BY	

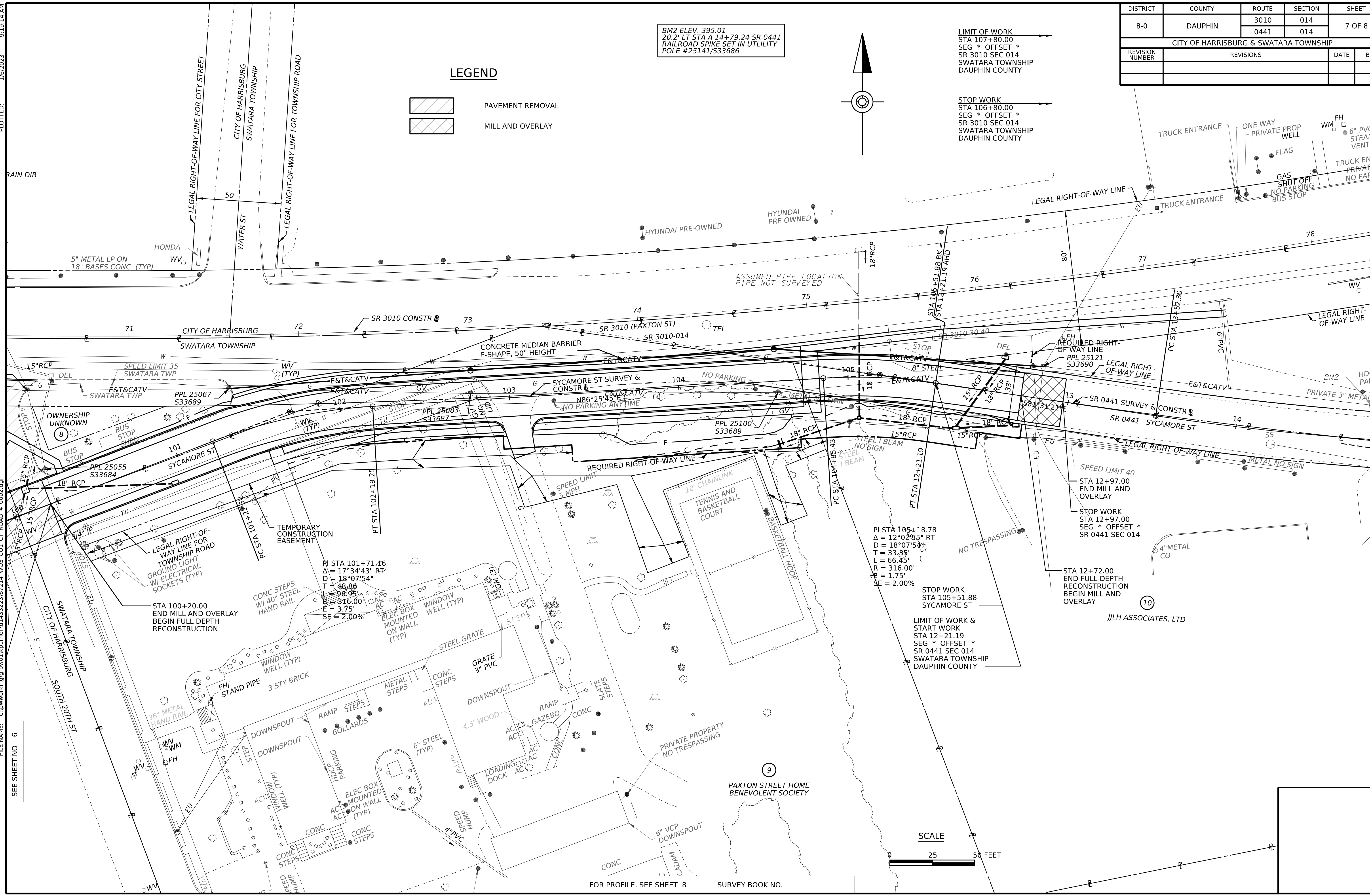
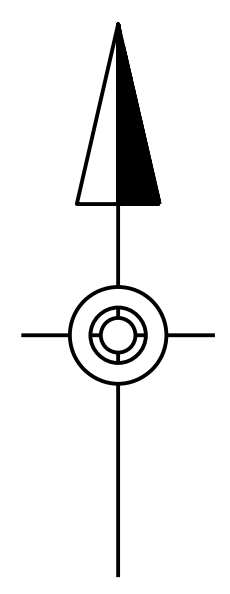
BM2 ELEV. 395.01'  
20.2' LT STA A 14+79.24 SR 0441  
RAILROAD SPIKE SET IN UTILITY  
POLE #25141/533686

LIMIT OF WORK  
STA 107+80.00  
SEG \* OFFSET \*  
SR 3010 SEC 014  
SWATARA TOWNSHIP  
DAUPHIN COUNTY

STOP WORK  
STA 106+80.00  
SEG \* OFFSET \*  
SR 3010 SEC 014  
SWATARA TOWNSHIP  
DAUPHIN COUNTY

**LEGEND**

-  PAVEMENT REMOVAL
-  MILL AND OVERLAY



FOR PROFILE, SEE SHEET 8

SURVEY BOOK NO.

RAIN DIR

HONDA  
WV

HYUNDAI PRE-OWNED

CITY OF HARRISBURG  
SWATARA TOWNSHIP

CONCRETE MEDIAN BARRIER  
F-SHAPE, 50" HEIGHT

NO PARKING ANYTIME

TENNIS AND BASKETBALL COURT

PAXTON STREET HOME BENEVOLENT SOCIETY

J/LH ASSOCIATES, LTD

OWNERSHIP UNKNOWN

BUS STOP

BUS STOP

BUS STOP

BUS STOP

BUS STOP

BUS STOP

BUS STOP

BUS STOP

BUS STOP

BUS STOP

BUS STOP

BUS STOP

BUS STOP

PPL 25067  
S33689

PPL 25083  
S33687

PPL 25055  
S33684

PPL 25100  
S33689

PPL 25121  
S33690

PPL 25100  
S33689

PPL 25100  
S33689

PPL 25100  
S33689

PPL 25100  
S33689

PPL 25100  
S33689

PPL 25100  
S33689

PPL 25100  
S33689

PPL 25100  
S33689

PPL 25100  
S33689

PI STA 101+71.16  
Δ = 17°34'43" RT  
D = 18°07'54"  
T = 48.86'  
L = 96.95'  
R = 316.00'  
E = 3.75'  
SE = 2.00%

PI STA 105+18.78  
Δ = 12°02'55" RT  
D = 18°07'54"  
T = 33.35'  
L = 66.45'  
R = 316.00'  
E = 1.75'  
SE = 2.00%

STOP WORK  
STA 105+51.88  
SYCAMORE ST

STOP WORK  
STA 12+97.00  
END MILL AND OVERLAY

STOP WORK  
STA 12+72.00  
END FULL DEPTH RECONSTRUCTION  
BEGIN MILL AND OVERLAY

STOP WORK  
STA 107+80.00  
SEG \* OFFSET \*  
SR 3010 SEC 014  
SWATARA TOWNSHIP  
DAUPHIN COUNTY

STOP WORK  
STA 106+80.00  
SEG \* OFFSET \*  
SR 3010 SEC 014  
SWATARA TOWNSHIP  
DAUPHIN COUNTY

50'

5" METAL LP ON  
18" BASES CONC (TYP)

SR 3010 CONSTR

SR 3010 (PAXTON ST)

SR 3010-014

SR 0441 SURVEY & CONSTR

SR 0441 SYCAMORE ST

SR 0441 SEC 014

SR 0441 SEC 014

SR 0441 SEC 014

SR 0441 SEC 014

SR 0441 SEC 014

SR 0441 SEC 014

SR 0441 SEC 014

50'

5" METAL LP ON  
18" BASES CONC (TYP)

SR 3010 CONSTR

SR 3010 (PAXTON ST)

SR 3010-014

SR 0441 SURVEY & CONSTR

SR 0441 SYCAMORE ST

SR 0441 SEC 014

SR 0441 SEC 014

SR 0441 SEC 014

SR 0441 SEC 014

SR 0441 SEC 014

SR 0441 SEC 014

SR 0441 SEC 014

50'

5" METAL LP ON  
18" BASES CONC (TYP)

SR 3010 CONSTR

SR 3010 (PAXTON ST)

SR 3010-014

SR 0441 SURVEY & CONSTR

SR 0441 SYCAMORE ST

SR 0441 SEC 014

SR 0441 SEC 014

SR 0441 SEC 014

SR 0441 SEC 014

SR 0441 SEC 014

SR 0441 SEC 014

SR 0441 SEC 014

50'

5" METAL LP ON  
18" BASES CONC (TYP)

SR 3010 CONSTR

SR 3010 (PAXTON ST)

SR 3010-014

SR 0441 SURVEY & CONSTR

SR 0441 SYCAMORE ST

SR 0441 SEC 014

SR 0441 SEC 014

SR 0441 SEC 014

SR 0441 SEC 014

SR 0441 SEC 014

SR 0441 SEC 014

SR 0441 SEC 014

50'

5" METAL LP ON  
18" BASES CONC (TYP)

SR 3010 CONSTR

SR 3010 (PAXTON ST)

SR 3010-014

SR 0441 SURVEY & CONSTR

SR 0441 SYCAMORE ST

SR 0441 SEC 014

SR 0441 SEC 014

SR 0441 SEC 014

SR 0441 SEC 014

SR 0441 SEC 014

SR 0441 SEC 014

SR 0441 SEC 014

50'

5" METAL LP ON  
18" BASES CONC (TYP)

SR 3010 CONSTR

SR 3010 (PAXTON ST)

SR 3010-014

SR 0441 SURVEY & CONSTR

SR 0441 SYCAMORE ST

SR 0441 SEC 014

SR 0441 SEC 014

SR 0441 SEC 014

SR 0441 SEC 014

SR 0441 SEC 014

SR 0441 SEC 014

SR 0441 SEC 014

50'

5" METAL LP ON  
18" BASES CONC (TYP)

SR 3010 CONSTR

SR 3010 (PAXTON ST)

SR 3010-014

SR 0441 SURVEY & CONSTR

SR 0441 SYCAMORE ST

SR 0441 SEC 014

SR 0441 SEC 014

SR 0441 SEC 014

SR 0441 SEC 014

SR 0441 SEC 014

SR 0441 SEC 014

SR 0441 SEC 014

50'

5" METAL LP ON  
18" BASES CONC (TYP)

SR 3010 CONSTR

SR 3010 (PAXTON ST)

SR 3010-014

SR 0441 SURVEY & CONSTR

SR 0441 SYCAMORE ST

SR 0441 SEC 014

SR 0441 SEC 014

SR 0441 SEC 014

SR 0441 SEC 014

SR 0441 SEC 014

SR 0441 SEC 014

SR 0441 SEC 014

50'

5" METAL LP ON  
18" BASES CONC (TYP)

SR 3010 CONSTR

SR 3010 (PAXTON ST)

SR 3010-014

SR 0441 SURVEY & CONSTR

SR 0441 SYCAMORE ST

SR 0441 SEC 014

SR 0441 SEC 014

SR 0441 SEC 014

SR 0441 SEC 014

SR 0441 SEC 014

SR 0441 SEC 014

SR 0441 SEC 014

50'

5" METAL LP ON  
18" BASES CONC (TYP)

SR 3010 CONSTR

SR 3010 (PAXTON ST)

SR 3010-014

SR 0441 SURVEY & CONSTR

SR 0441 SYCAMORE ST

SR 0441 SEC 014

SR 0441 SEC 014

SR 0441 SEC 014

SR 0441 SEC 014

SR 0441 SEC 014

SR 0441 SEC 014

SR 0441 SEC 014

50'

5" METAL LP ON  
18" BASES CONC (TYP)

SR 3010 CONSTR

SR 3010 (PAXTON ST)

SR 3010-014

SR 0441 SURVEY & CONSTR

SR 0441 SYCAMORE ST

SR 0441 SEC 014

SR 0441 SEC 014

SR 0441 SEC 014

SR 0441 SEC 014

SR 0441 SEC 014

SR 0441 SEC 014

SR 0441 SEC 014

50'

5" METAL LP ON  
18" BASES CONC (TYP)

SR 3010 CONSTR

SR 3010 (PAXTON ST)

SR 3010-014

SR 0441 SURVEY & CONSTR

SR 0441 SYCAMORE ST

SR 0441 SEC 014

SR 0441 SEC 014

SR 0441 SEC 014

SR 0441 SEC 014

SR 0441 SEC 014

SR 0441 SEC 014

SR 0441 SEC 014

50'

5" METAL LP ON  
18" BASES CONC (TYP)

SR 3010 CONSTR

SR 3010 (PAXTON ST)

SR 3010-014

SR 0441 SURVEY & CONSTR

SR 0441 SYCAMORE ST

SR 0441 SEC 014

SR 0441 SEC 014

SR 0441 SEC 014

SR 0441 SEC 014

SR 0441 SEC 014

SR 0441 SEC 014

SR 0441 SEC 014

50'

5" METAL LP ON  
18" BASES CONC (TYP)

SR 3010 CONSTR

SR 3010 (PAXTON ST)

SR 3010-014

</

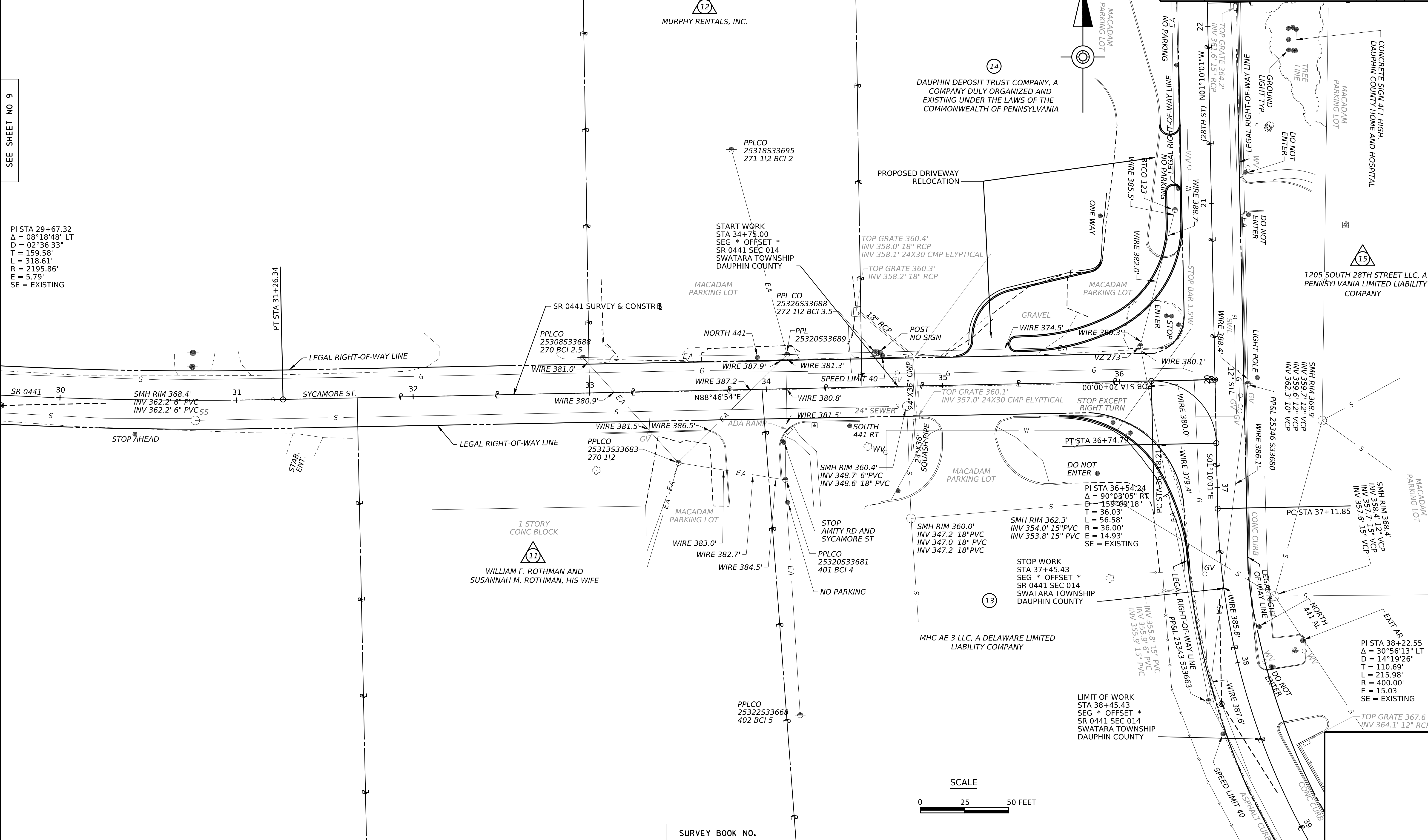
9:19:29 AM  
1/6/2023  
PLOTTED:

SEE SHEET NO 9

PI STA 29+67.32  
Δ = 08°18'48" LT  
D = 02°36'33"  
T = 159.58'  
L = 318.61'  
R = 2195.86'  
E = 5.79'  
SE = EXISTING

FILE NAME: c:\pwworking\pww01\journal\14332323167214\_1\03\_CO1\_CT\_ROAD\_4\_0005.dwg

DISTRICT	COUNTY	ROUTE	SECTION	SHEET
8-0	DAUPHIN	3010	014	7A OF 8
SWATARA TOWNSHIP				
REVISION NUMBER	REVISIONS	DATE	BY	



12  
MURPHY RENTALS, INC.

14  
DAUPHIN DEPOSIT TRUST COMPANY, A COMPANY DULY ORGANIZED AND EXISTING UNDER THE LAWS OF THE COMMONWEALTH OF PENNSYLVANIA

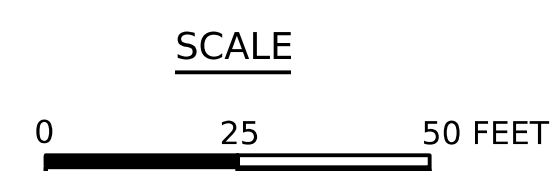
15  
1205 SOUTH 28TH STREET LLC, A PENNSYLVANIA LIMITED LIABILITY COMPANY

11  
WILLIAM F. ROTHMAN AND SUSANNAH M. ROTHMAN, HIS WIFE

13  
MHC AE 3 LLC, A DELAWARE LIMITED LIABILITY COMPANY

LIMIT OF WORK  
STA 38+45.43  
SEG \* OFFSET \*  
SR 0441 SEC 014  
SWATARA TOWNSHIP  
DAUPHIN COUNTY

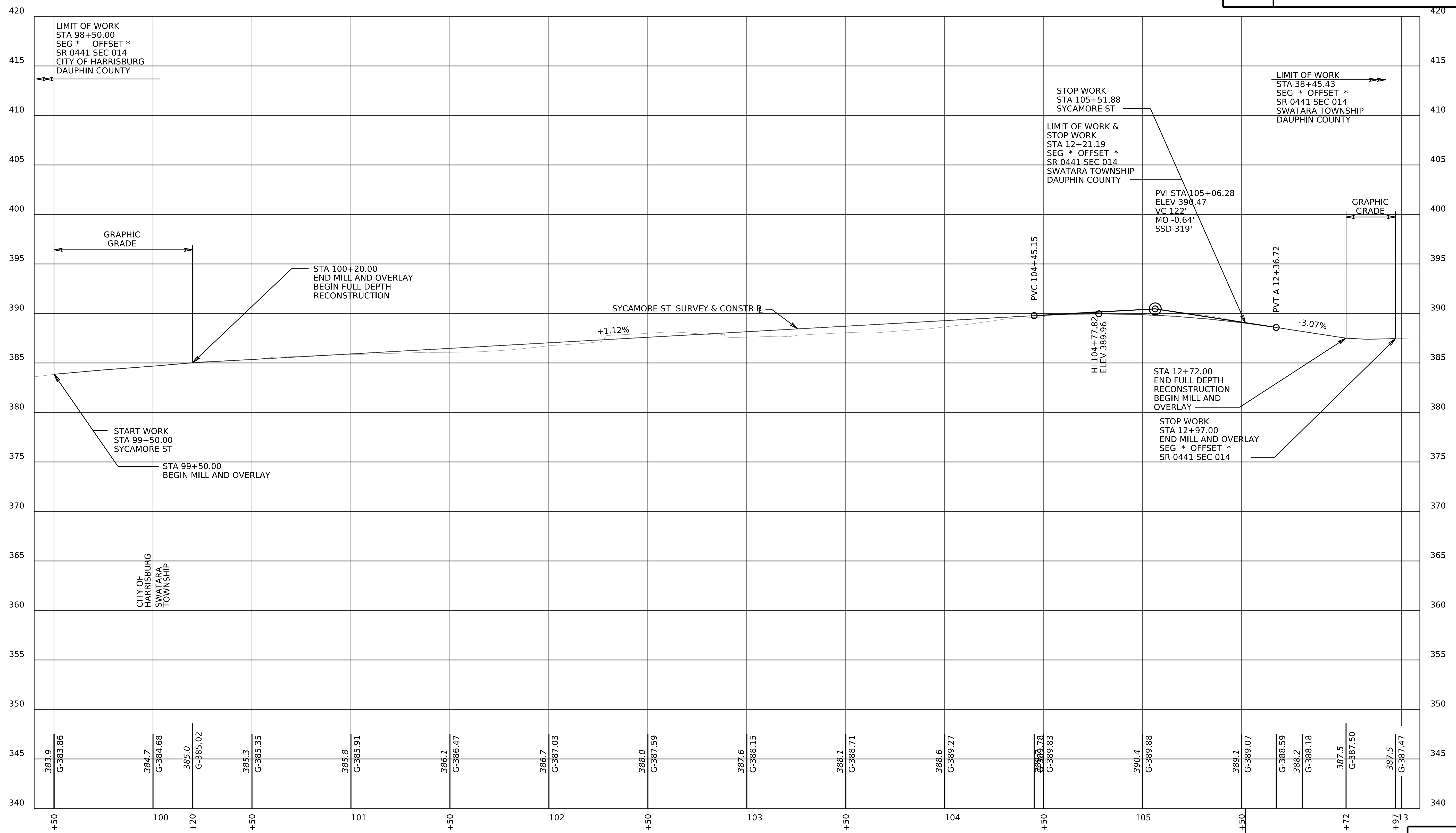
PI STA 38+22.55  
Δ = 30°56'13" LT  
D = 14°19'26"  
T = 110.69'  
L = 215.98'  
R = 400.00'  
E = 15.03'  
SE = EXISTING



SURVEY BOOK NO.

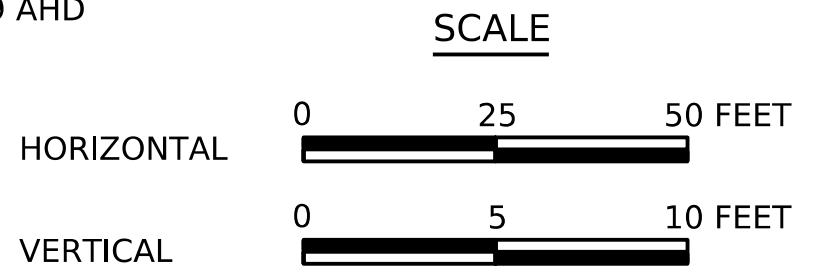
OPERATOR: kturnell  
 FILE NAME: c:\pwworking\gfw01\kturnell\14123223\67214\_W03\_CO1\_CT\_ROAD\_5\_0001.dgn  
 FILE NAME: c:\pwworking\gfw01\kturnell\14123223\67214\_W03\_CO1\_CT\_ROAD\_5\_0001.dgn  
 1/6/2023 9:19:38 AM

DISTRICT	COUNTY	ROUTE	SECTION	SHEET
8-0	DAUPHIN	3010	014	8 OF 8
		0441	014	
CITY OF HARRISBURG & SWATARA TOWNSHIP				
REVISION NUMBER	REVISIONS	DATE	BY	



**SYCAMORE STREET**

STA 105+51.88 BK =  
STA 12+21.19 AHD



FOR PLAN, SEE SHEETS 6 & 7

SURVEY BOOK NO.